

# Landscaping and biodiversity enhancement

The Ballyross project is being specifically designed to include comprehensive landscaping measures to reduce potential visibility of the scheme.

A landscaping plan will form part of the planning application and will set out new planting measures which would provide visual screening of the project.

We aim to retain existing hedgerow and woodland where possible, and could include new hedgerow, shrub and woodland planting. Planting may be on top of soil bunds to provide additional height.

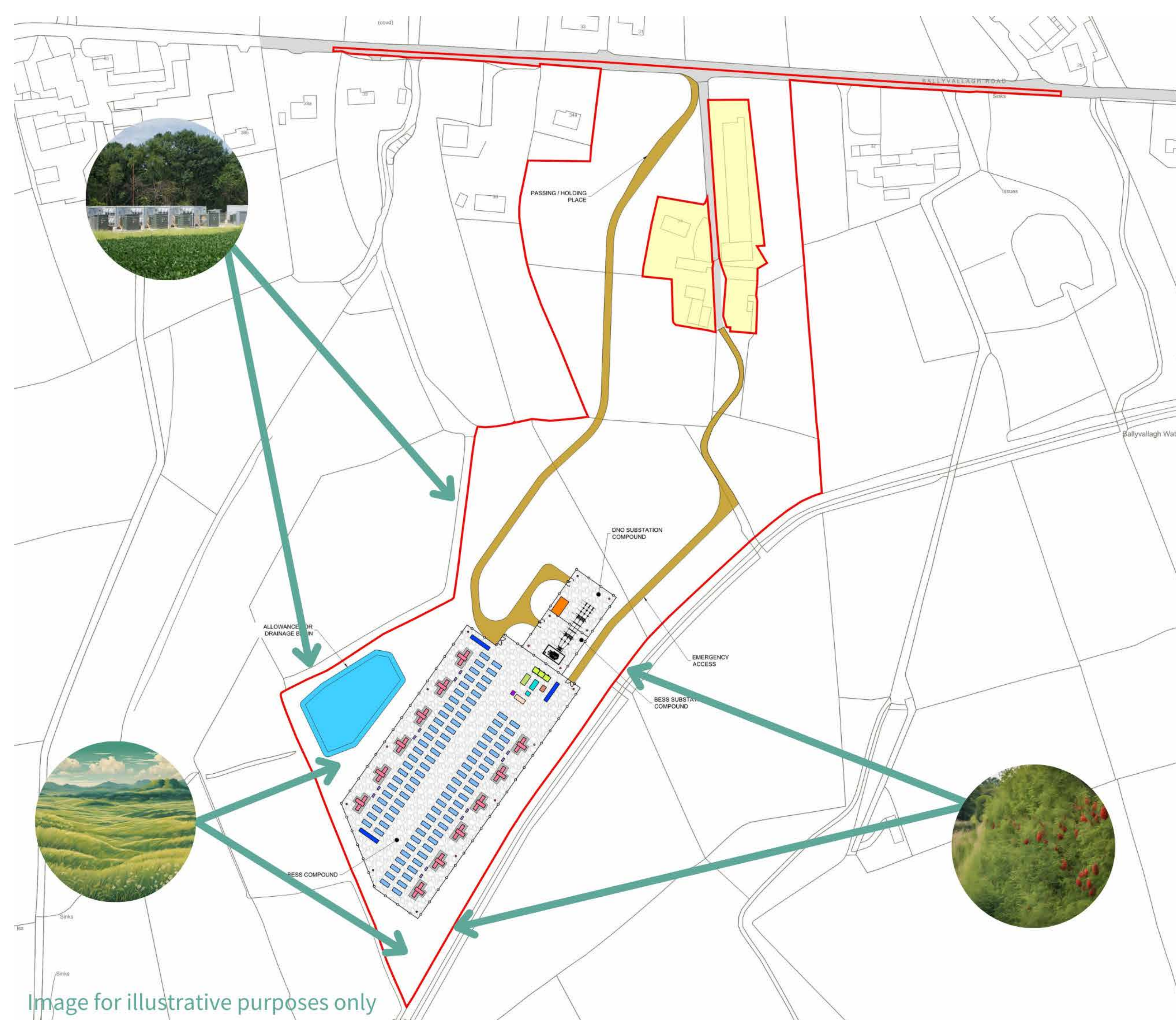
The landscaping plan will also provide information on the timings and aftercare regime for all planting.

Whilst there are currently no statutory targets for biodiversity protection, restoration or enhancement in Northern Ireland, for the Ballyross proposal we aim to deliver a project which will enhance biodiversity, where possible, as part of the development.

The creation of new hedgerow and woodland can provide wildlife corridors and vital resources for a range of wildlife.

Areas around the compound are typically sown with a wildflower meadow mix which can provide nectar-rich areas for pollinators. Riparian woodland planted around any surface water and drainage systems could deliver further biodiversity enhancements, providing good habitat for invertebrates that ultimately provide food for aquatic life.

Where appropriate we would also introduce measures such as bird, bat and reptile housing.



Existing hedgerow and planting to be retained where possible and enhanced through infill planting and hedgerow management

New native planting will provide visual screening as well as providing wildlife corridors and vital resources for mammals, birds and invertebrates

Areas around the compound are typically sown with species-rich meadow and grassland mixes which are amongst the most threatened habitats across the island of Ireland